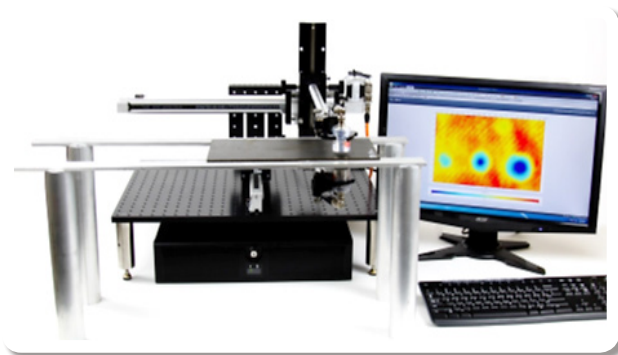


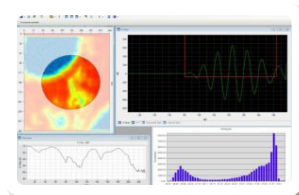
NCU-空气耦合超声检测系统

Ultran的空气耦合超声波探头采用特殊结构、材料和加工工艺，在1997年获得了国际专利。可在空气或者其它气体中高效传播，其工作频率范围为 20 KHz -6.5 MHz。

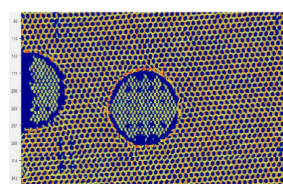
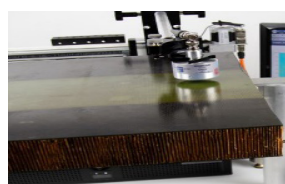
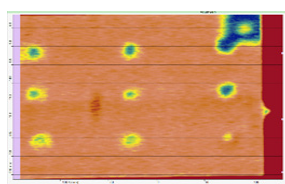
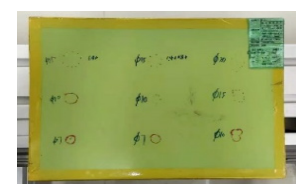


主要应用

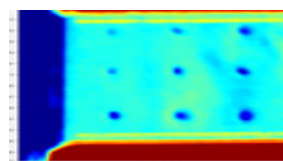
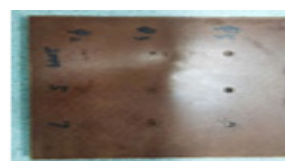
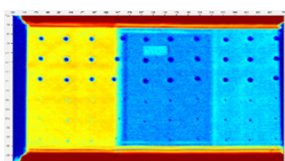
- ★ 复合材料无损检测评估
- ★ 医学领域
- ★ 食品检测
- ★ 材料表面分析



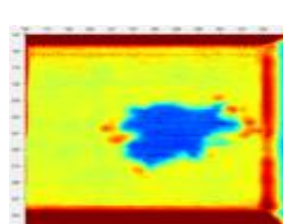
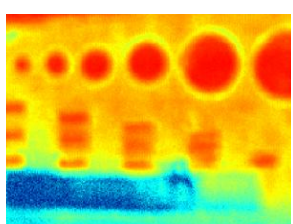
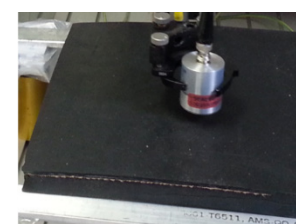
图像强度分析软件



蜂窝结构检测

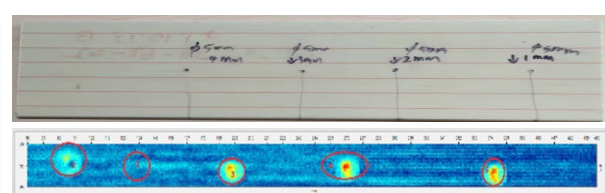
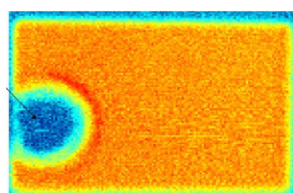


层压板检测



橡胶材质检测

玻纤结构检测



铝硅结合复材材料检测

拉挤板检测